

# Bull Dog Linear/Rotary Bearings™

**Super Tough Glass Epoxy Shell with  
Minuteman Self Lubricating™ Liner**

**CLOSED VERSION ONLY**

**HIGH IMPACT/SHOCK/VIBRATION  
Resistant**



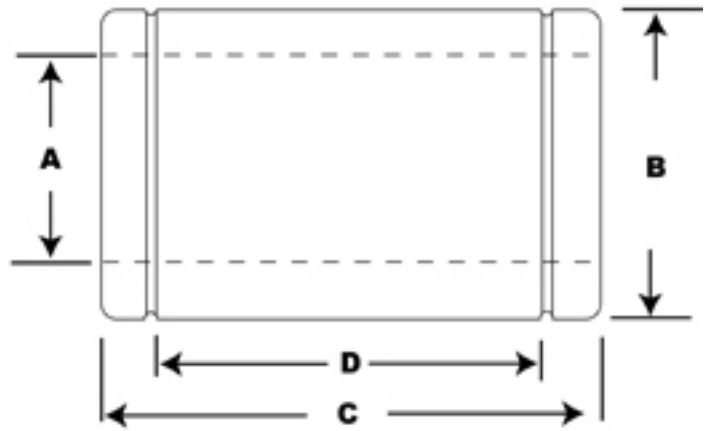
## **Advantages:**

- **Self Lubricating**
- **Lightweight/Non-Metallic**
- **Chemically Inert**
- **Electrically Insulated**
- **Impact Resistant**

## **Applications:**

- **Military Vehicles/Gun Mounts**
- **Marine Applications**
- **Washdown Equipment**
- **Packaging Machinery**
- **Outdoor Environments**
- **Construction Equipment**

- **High Load Capacity/high-shock Load Capability**  
Incredible compression loads that literally crush competing composite materials.  
Self-lubricating design Provides maintenance-free operation and eliminates the need for costly lubrication systems.
- **Low Coefficient of Friction**  
Reduces wear and extends operating life. Coefficients as low as 0.05 in dry applications and <0.009 in lubricated environments.
- **Temperature Resistant**  
Operates flawlessly in temperatures ranging from cryogenic levels to a high of 300°F (149°C )
- **Dimensionally Stable in Fluids (water, corrosive liquids, and chemical solutions)**  
Absorption rates are negligible, providing near-zero swell
- **Flexible Material Design**  
Suitable for press fit, freeze fit, epoxy bonding, as well as conventional mechanical retention.
- **Low Weight/high Strength**  
Accommodates high-load with a compact strength to weight ratio



PSI	PV	SFM	Shafting	Coefficient of Friction
5000	30,000	400	Rc60 Steel 300 Series Stainless Ceramic Coated Aluminum	.09 - .12

Part Number Closed	Bearing Size Dia. A	ID Tolerance	OD B	Housing Bore Min	Housing Bore Max	Bearing Length C	Length Tolerance	Distance Between Retaining Rings D
LFG-8	1/2"	.5015/.5005	7/8"	.87500/.87350	0.8750	1.250	1.2500/1.2350	1.012
LFG-10	5/8"	.6255/.6265	1-1/8"	1.1250/1.2350	1.1250	1.500	1.5000/1.4850	1.095
LFG-12	3/4"	.7515/.7505	1-1/4"	1.2500/.2480	1.2510	1.625	1.6250/1.6100	1.250
LFG-16	1"	1.0015/1.0005	1-9/16	1.5625/1.5605	1.5625	2.250	2.2500/2.2350	1.864

**NOTE:** LM76 Bull Dog Bearings™ may be tough on the outside, but they are non-abrasive on the inside. Thus, Bull Dog Linear Bearings™ can run on soft 300 series stainless shafting.



## Need Linear Shafting?

LM76 is a major supplier of linear shafting and shaft assemblies:

- RC 60 Hardened Steel Shafting
- 440C Stainless
- 300 Series Stainless
- Ceramic Coated Aluminum
- Shaft Assemblies

## LM76 LINEAR MOTION BEARINGS

140 INDUSTRIAL DRIVE  
EAST LONGMEADOW, MASSACHUSETTS 01028  
1-800-513-3163 FAX: 413-525-3735  
WWW.LM76.COM