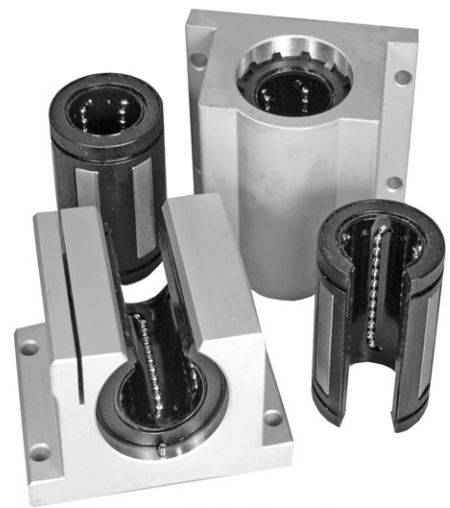




# What's the Difference?



**VS**



**LM76 Black Racer Ceramic Coated Bearings**

**Linear Ball Bearings**

Yes	Requires Lubrication	Yes
Yes	High Loads	No
Yes	Rapid Oscillation	No
Yes	High Accel/Decel	No
Yes	Shock/Vibration	No
Yes	Contamination	No
Yes	Special Configurations	No
Yes	FDA Compliant	No
Yes	Chemically Inert	No
No	Catastrophic Failure Mode	Yes
No	Groove Shafting ( Brinelling)	Yes
Yes	Vacuum Rated	No
Yes (400F)	High Temp	No (180F)
Yes	Linear + Rotary	No
Yes (100 million linear feet)	Life Tested	Yes (2 million linear inches)
.04 - .08	Coefficient of Friction	.010 - .001
Poor	Self-Alignment/Compliant	Very Good

At first glance, Black Racer linear bearings wipe the floor with linear ball bearings. However, linear ball bearings provide the lowest coefficient of friction for mechanical bearings - only surpassed by air bearings. Linear ball bearings are more compliant than sleeve bearings, thus they are more forgiving in applications where shaft parallelism is not exact. Linear ball bearings offer more self-alignment capability than sleeve bearings. Although Black Racer bearings are direct drop-in replacements for inch linear ball bearings, you should call LM76 to ensure your application is a good candidate. For more information call Mike Quinn: 1-800-513-3163 or email: [mquinn@LM76.com](mailto:mquinn@LM76.com)

1-800-513-3163



Join The Black Racer Squadron today! Get a free squadron patch or an 11"x17" poster by calling Christine @ 1-800-513-3163



Black Racer Family of Linear Bearings

**LM76**

140 Industrial Drive  
East Longmeadow, Ma 01028  
1-800-513-3163  
www.LM76.com