

# Slide Selection

LM76 - 1-800-513-3163

Fax: 413-525-3735

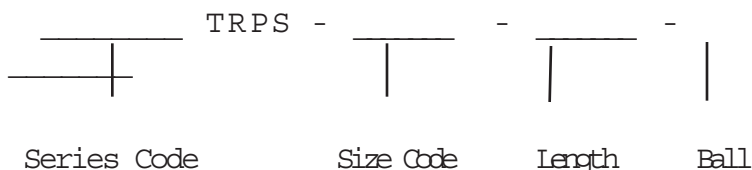
www.LM76.com

## Determining Specifications and Requirements

1. Determine the size and stroke of slide required.
2. Is a lube system required?
3. Please furnish the following to the factory:

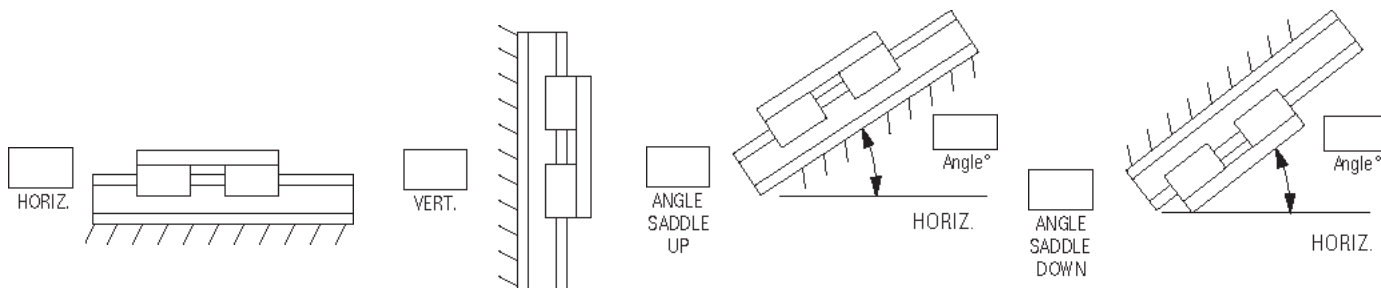
- a. Model designation
- b. Lube system requirements
- c. Mounting orientation, saddle position if mounted at an angle
- d. Load to be carried and approximate center of gravity from saddle center

Model Number



- e. The location and magnitude of any force which resists the motion of the slide
- f. Acceleration rate and maximum velocity of the saddle

### Mounting Orientation:



Please fill in the boxes for your application.

Cycle Rate:  Per Hour       Per Minute

Max Saddle Velocity:  Inches/Second

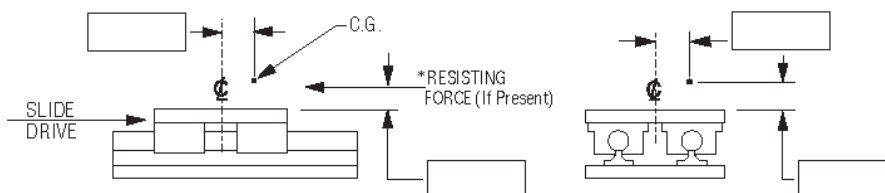
Acceleration Rate:  Inches/Second<sup>2</sup>

Deceleration Rate:  Inches/Second<sup>2</sup>

Load:  lbs.

### Location of Center of Gravity from Saddle Center

Please fill in the boxes for your application.



\* Example of Resisting Force would be tool thrust for a drill head mounted on slide.

Resisting Force:  lbs.

Life Requirement:  Strokes       Hours

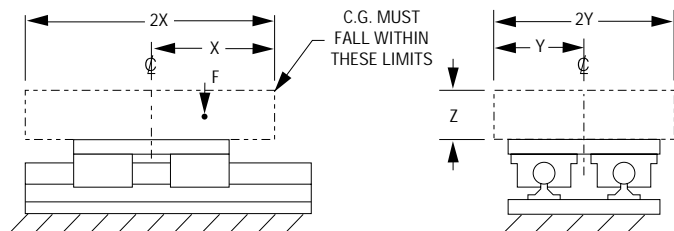
## PTFE Self Lubricating Composite Bearing Slides

# Load Capacities

## Recommended Safe Loading

For unlubricated slide applications where speeds are less than 90 feet/minute (18 inches/second).

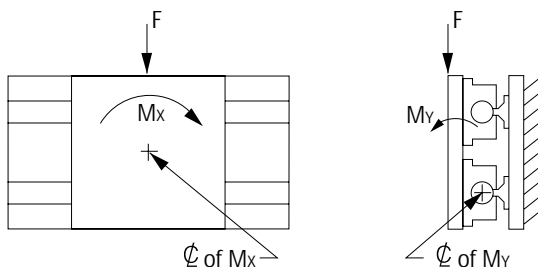
### Standard Mounting



### Recommended Safe Loading

Size	F Max. (lbs.)	X (In.)	Y (In.)	Z (In.)
08	1450	4.00	2.37	3.00
10	2200	4.75	2.76	3.50
12	2850	5.00	2.85	4.00
16	5275	5.50	3.37	4.50
20	7750	6.75	4.05	5.50
24	10600	7.86	4.90	6.50
32	18750	10.75	6.00	9.00

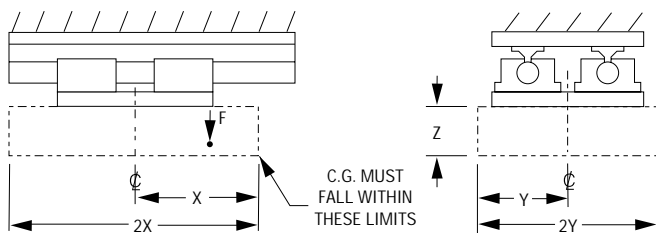
### Side Mounting



### Recommended Safe Loading

Size	F Max (lbs.)	M <sub>x</sub> (In-lb.)	M <sub>y</sub> (In-lb.)
08	540	910	1500
10	760	1680	2750
12	840	1710	2875
16	1050	3300	4430
20	1750	6175	8750
24	2100	9600	12600
32	3300	19000	28050

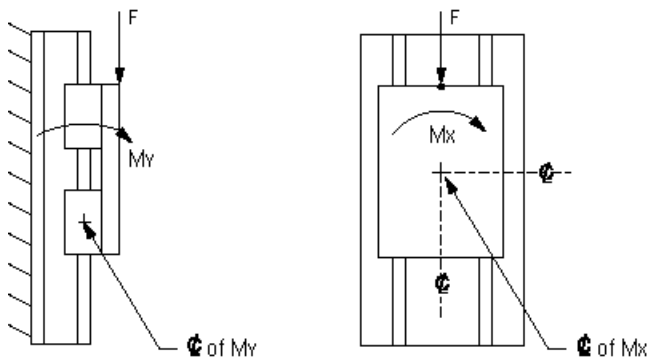
### Inverted Mounting



### Recommended Safe Loading

Size	F Max. (lbs.)	X (In.)	Y (In.)	Z (In.)
08	195	4.85	2.91	3.00
10	285	5.69	3.33	3.50
12	315	6.52	3.75	4.00
16	450	7.31	4.58	4.50
20	712	8.84	5.42	5.50
24	900	10.50	6.67	6.50
32	1425	14.67	8.33	9.00

### Vertical Mounting



### Recommended Safe Loading

Size	F Max (lbs.) <sup>△</sup>	M <sub>x</sub> (In-lb.)	M <sub>y</sub> (In-lb.)
08	260	1445	1500
10	300	2750	2750
12	300	2875	2875
16	600	5000	4430
20	675	9500	8750
24	710	14400	12600
32	900	32300	28050

<sup>△</sup> - Applies only when using T1RPS or T2RPS & T1LRPS or T2LRPS slides

<sup>△</sup> - If F is exceeded consult factory.

Note: w/TRPS, F Max. is dependent upon customer s