



# LM76

## Linear Bearings

6 SIMPLE  
STEPS

LM76 Has You Covered



FDA Compliance  
Wash Down Compliance

# Sanitation Standard Operating Procedures (SSOPs)

Consistently using correct cleaning and sanitizing procedures in dairy and food processing plants is the foundation to producing high quality, safe food. Sanitation Standard Operating Procedures (SSOPs) are detailed procedures specifying what to clean, how to clean, how often to clean, and the records used for monitoring.

A food processing or beverage plant's washdown areas are unique environments that undergo harsh abuse from pressure washer sprays and a multitude of chemicals used in the cleaning and sanitation of equipment.

In the baking industry, warm water and soap is a common wash down combination. However, meat, poultry and dairy products require more aggressive chemicals like sodas (sodium hydroxide) and self-foaming cleaners, foaming acids and self-foaming chlorinated caustic cleaners like chlorine to sanitize bearings, shafting and direct food contact areas.

At LM76, we understand the issues associated with FDA complaint materials, both food contact and outside food contact applications and aggressive chlorinated foaming agents and sodas like sodium hydroxide.



## LM76 Materials & Coatings

Stainless steels: 303 - 304 and 316 are common bearing shells and shafting materials. In addition, we turn to proven and compliant PTFE self-lubricating liners that are inert to chemical wash down. We also employ a number of proven and compliant coatings such as hard coat anodized aluminum, electroless nickel plated aluminum for pillow blocks, flange blocks, shaft supports, shaft end supports and Armoloy® coated stainless (300 and 440c Class L) and steel (1060 Rc60 Class L shafting).

**1-800-513-3163**

**[www.LM76.com](http://www.LM76.com)**

# 6 Simple Options Concerning Wash Down Linear Bearings & Shafting

## PILLOW BLOCK BEARINGS



1



**FOODSTREAM ECLECTROLESS  
NICKEL PLATED PILLOW BLOCK  
WITH 300 SERIES STAINLESS  
BEARING SHELL AND FDA/WASH  
DOWN COMPLIANT PTFE,  
SELF-LUBRICATING LINER**

2



**FOODSTREAM ECLECTROLESS  
NICKEL PLATED PILLOW BLOCK  
WITH CERAMIC COATED ALUMINUM  
BEARING SHELL AND WASH DOWN  
COMPLIANT PTFE,  
SELF-LUBRICATING LINER**

3



**FOODSTREAM ECLECTROLESS  
NICKEL PLATED PILLOW BLOCK  
WITH SELF-ALIGNING, CORROSION  
RESISTANT LINEAR BALL BEARING.  
LOWEST FRICTION BUT **MUST BE**  
LUBRICATED**

1-800-513-3163

[www.LM76.com](http://www.LM76.com)



# SHAFTING

4



**FDA  
Wash Down  
Rated**

**Stainless shafting cut-to-length or machined to print. 303/304/316 Class L for superior corrosion resistance for PTFE, Self-Lubricating Linear Bearings. 440C case hardened stainless for ball and roller type bearings.**

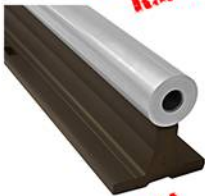
5



**FDA  
Wash Down  
Rated**

**Rc60 case hardened steel with Armoloy® Coating for excellent corrosion resistance and enhanced hardness and wear properties Rc78. Class L**

6



**FDA  
Wash Down  
Rated**

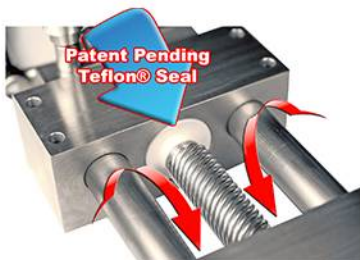
**For highly caustic wash down applications we provide Armoloy® coated shafting coupled with ceramic coated or electroless nickel coated aluminum components such as shaft supports. Class L**



# FDA/Wash Down Compliant Seal Linear Slides



LM76 designs and manufactures linear slides from 300 series stainless steel in an open, pass-through, designs to prevent direct product contamination or pathogenic bacterial growth. LM76 employs FDA/Wash Down compliant, self-lubricating PTFE linear bearings to ensure low friction, corrosion resistance without a catastrophic failure mode i.e., balls, and metal fragment contamination. Moreover, LM76 uses its Molded Polymatrix Screw Nut (no balls) and patent pending Teflon® screw seals to further guarantee against mechanical debris contamination and product inclusions.

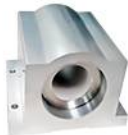


Pass-Through Design ensures proper evacuation and protects against product inclusions

**1-800-513-3163**

**[www.LM76.com](http://www.LM76.com)**

# FDA/Washdown Scraper Seal



**ETX**  
Technology

**Dairy  
Cheese  
Meat  
Poultry**

***Don't let it "lie there, fester and rot!"***

From a classic rugby song

Often you need more than a wiper. LM76 has engineered a unique snap-in FDA Compliant/Self-Lubricating scraper seal for our closed FDA linear bearings. ETX seals are designed for an interference fit around the shaft. As the bearing travels along the shaft, ETX scraper seals skive away debris and will not allow debris to become included between bearing and shaft where it can become trapped and resistant to washdown evacuation - leading to bacterial contamination. A double wall design produces a constant, uniform spring force guaranteeing complete sealing around the circumference of the shaft. ETX seals have an outstanding "K" Factor (wear-ability) and low coefficient of friction. **NOTE:** Only available on closed bearings, pillow blocks and flange blocks.

**800-513-3163**  
**www.LM76.com**

**LM76**  
Linear Bearings

# LM76 has you covered when you need washdown rated linear bearings!



FoodStream Electroless-Nickel Plated Aluminum Pillow Blocks. FDA and Washdown Compliant

Option 1: LM76 Stainless/PTFE, Self-Lubricating Linear Bearings. FDA and Washdown Compliant

Option 2: Thomson® Super Smart™ (CR) Corrosion Resistant Linear Ball Bearings for Extremely High Loads, Low Friction and Self-Aligning Capabilities



**1-800-513-3163 ISO 9000**  
**[www.LM76.com](http://www.LM76.com)**



# Anyone can cut and ship shafting. We engineer **SOLUTIONS**

**ARMOLOY COATED 440C  
Stainless Shaft**

**Debris Flushways**

**FDA/Washdown  
Solutions**

**Ceramic Coated  
Aluminum Support**



**LM76**  
**Linear Bearings**

**1-800-513-3163**  
**www.LM76.com**  
**ISO 9000**