

SG

SPEED DEMON

LM76
Linear Bearings



**The #1 Choice for
X Axis Linear Motion on
CNC Plasma Cutter Tables**

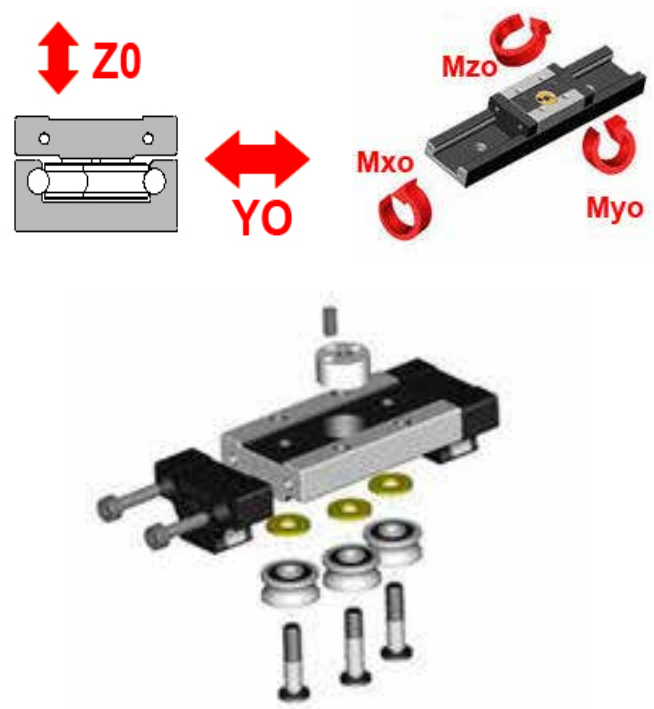
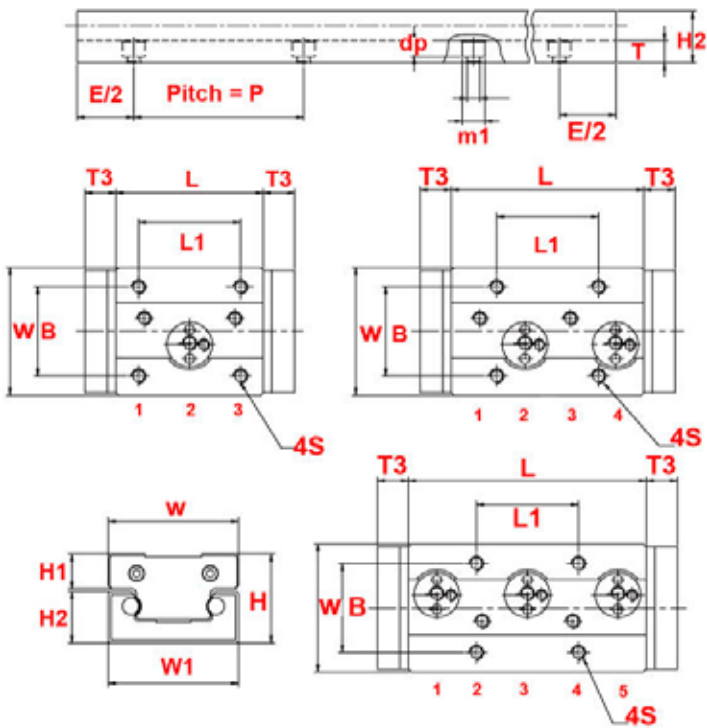


5 Roller Block - 3 Eccentrics

4 Roller Block - 2 Eccentrics

3 Roller Block - 1 Center Eccentric

FLEXIBILITY



| SG Block | Whole System | SPEED DEMON Rail SGR | | | | | | | | | | | | | SPEED DEMON BLOCK SGB | | | | |
|-------------------|--------------|----------------------|----|----|-----|-----|-----------|----|----|-----|-------|-----|----|----|-----------------------|------|-------|--------|--------|
| SIZE # of Rollers | H | W | W1 | H2 | dp | P | Shaft Dia | T | m1 | m | H1 | L | B | T3 | ZO | YO | Mxo | Myo | Mzo |
| 25 | 44 | 70 | 69 | 26 | 7 | 120 | 10 | 10 | 11 | 6.6 | 16.65 | 100 | 57 | 45 | 1470 | 1260 | 41.58 | 48.51 | 67.62 |
| | | | | | | | | | | | | 133 | | | 2100 | 1800 | 96.6 | 118.8 | 138.6 |
| | | | | | | | | | | | | 166 | | | 2940 | 2520 | 135 | 249.48 | 291.06 |
| 35 | 55 | 100 | 90 | 35 | 8.5 | 160 | 12 | 12 | 14 | 9 | 18 | 140 | 82 | 62 | 2800 | 2380 | 126 | 135 | 159.6 |
| | | | | | | | | | | | | 185 | | | 4000 | 3400 | 228 | 360 | 478 |
| | | | | | | | | | | | | 230 | | | 5600 | 4760 | 319.2 | 756 | 758 |



SG ADVANTAGES

- LOW FRICTION
- SMOOTH, QUIET RUNNING
- ADJUSTABLE PRELOAD
- LIGHTWEIGHT CONSTRUCTION
- EASY TO INSTALL
- STOCK RAILS 13 FEET (CUT-TO-SIZE)
- LOW COST LINEAR MOTION



**No one engineers
low friction linear roller
systems like *LM76*. More
options, more knowledge,
more experience,
more **SOLUTIONS!****

Engineered Solutions

LM76
Linear Bearings

LM76 Linear Roller Division
140 Industrial Drive
East Longmeadow,
Massachusetts 01028
Toll Free: 1-800-513-3163
International: 413-525-4166
www.LM76.com